

GATSBY & FRIENDS

THOMAS EDISON STATE COLLEGE FOUNDATION
1996 GALA





THE SIGNATURE RECOGNIZED AROUND
THE WORLD FOR QUALITY
HEALTH CARE PRODUCTS FOR
THE ENTIRE FAMILY

Johnson & Johnson

ONE JOHNSON & JOHNSON PLAZA • NEW BRUNSWICK, NJ 08933

THOMAS EDISON STATE COLLEGE GALA PROGRAM

GREETINGS MARIA P. Imbalzano, Co-Chair

WELCOME DR. GEORGE A. PRUITT
PRESIDENT of THOMAS EDISON STATE COLLEGE

Spirit of Edison NICHOLAS L. CARNEVALE
CHAIRMAN of the FOUNDATION BOARD

RESPONSES PAULA VAUGHAN, '90
RICHARD J. GILLESPIE

DINNER AND DANCING TO THE MUSIC OF TRILOGY

Cocktail music courtesy of THE WITHERSPOON STREET TRAVELING MEDICINE SHOW

PRINTING of Ad JOURNAL courtesy of DAVID SARNOFF RESEARCH CENTER

EMBODYING THE SPIRIT OF EDISON

PAULA VAUGHAN, '90
RICHARD J. GILLESPIE



GALA COMMITTEE

Co-Chairs

MARIA P. ImBALZANO, S. JOHN QUATTRONE

DEBORAH AGUIAR-VELEZ

ANDREW J. BROWN

SUZANNE BROWN

NICHOLAS L. CARNEVALE

ADELE K. ELLIS

RICHARD J. GILLESPIE

PAUL A. HAYS

LINDA HOLT

RICHARD & MARGARET HOISINGTON

ROBERT E. HUMES

JAMES KILGORE

JOHN J. MCCANN

MAUREEN MCGUIRE

RITA NOVIT

RICHARD NOWALK

DR. GEORGE A. PRUITT

MARGARET PYLES

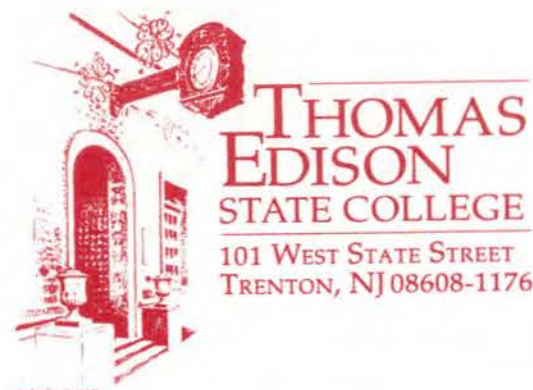
MARCY SAMET

RICHARD SIMKUS

BARBARA SPALDING

JOHN P. THURBER

FAY WERNICK



DEAR FRIENDS:

AS CO-CHAIRS OF THE THOMAS EDISON STATE COLLEGE FOUNDATION'S 1996 GALA, IT IS OUR PLEASURE TO WELCOME YOU. THIS IS THE FIFTH YEAR THAT THE FOUNDATION HAS HOSTED THIS SPECIAL EVENT, AND YOUR ATTENDANCE IS A WARM DISPLAY OF SUPPORT FOR THOMAS EDISON AND THE WORK OF THE FOUNDATION.

A TIME-HONORED TRADITION, THE SPIRIT OF EDISON AWARDS WILL BE PRESENTED TO TWO OUTSTANDING INDIVIDUALS FROM THE BUSINESS AND COLLEGE COMMUNITIES. THE SPIRIT OF EDISON AWARDS RECOGNIZE A NATIONAL BUSINESS LEADER AND A GRADUATE OF THOMAS EDISON STATE COLLEGE FOR CREATIVITY, COMMITMENT AND ENTREPRENEURIAL SPIRIT. WE KNOW YOU WILL JOIN US IN CONGRATULATING RICHARD J. GILLESPIE, CHAIRMAN OF THE BOARD OF GILLESPIE, INC., AND ALUMNA PAULA VAUGHAN, BSBA'90.

OUR ANNUAL GALA HAS EARNED A REPUTATION AS ONE OF THE MOST FESTIVE AND ENJOYABLE SOCIAL EVENTS IN THE REGION. AS YOU REVEL WITH FRIENDS AND COLLEAGUES, PLEASE TAKE A MOMENT TO REFLECT ON THE POWERFUL WORK THIS UNIQUE COLLEGE IS DOING TO HELP ADULTS AROUND THE GLOBE TO CREATE THEIR OWN PROGRAMS FOR SUCCESS. AND, LIKE ITS NAMESAKE, THOMAS ALVA EDISON, THE COLLEGE CONTINUES TO SEARCH FOR NEW AND INVENTIVE WAYS TO MEET THE NEEDS OF ITS ADULT STUDENTS.

THANK YOU FOR SHARING TONIGHT WITH US. HAVE A TERRIFIC TIME!

SINCERELY,

Maria P. Imbalzano

MARIA P. ImBALZANO, Co-CHAIR
1996 GALA COMMITTEE

S. John Quattrone

S. JOHN QUATTRONE, Co-CHAIR
1996 GALA COMMITTEE

THOMAS EDISON STATE COLLEGE FOUNDATION

BOARD OF DIRECTORS

CHAIRMAN
NICHOLAS L. CARNEVALE
 WALTER B. HOWE, INC.
 (RET.)

VICE CHAIRMAN
DR. JAMES E. CARNES
 David Sarnoff Research
 Center

Deborah Aguiar-Velez
 SISTEMAS CORPORATION

Andrew J. Brown
 TOTAL RESEARCH CENTER

Donald K. Conover
 AT&T (RET.)

Adele K. Ellis '88, '94
 THOMAS EDISON STATE
 COLLEGE ALUMNI
 ASSOCIATION

John R. Fischer
 Policy Management
 Systems Corporation

Owen O. Freeman
 COMMONWEALTH STATE
 BANK

Richard J. Gillespie
 Gillespie, Inc.

Paul A. Hays '89
 THOMAS EDISON STATE
 COLLEGE ALUMNI
 ASSOCIATION

J. Robert Hillier
 The Hillier Group

Maria P. Imbalzano, Esq.
 Stark & Stark

Richard E. Ingram, Esq.
 ATTORNEY-AT-LAW

James Kilgore
 THE PRINCETON PACKET,
 INC.

Eric R. Lear
 LEAR & PANNEPACKER,
 CPAs

Peter S. Longstreth
 Aegis Property Group

John J. McCann
 LYNCH, JONES & RYAN, INC.

Maureen McGuire
 THOMAS EDISON STATE
 COLLEGE

John P. Neary
 CORESTATES BANK

Rita Novitt
 W.K. Kellogg Foundation
 (RET.)

Marilyn R. Pearson
 MERRILL LYNCH &
 COMPANY

Maurice Perilli
 ROMA FEDERAL SAVINGS
 BANK

Dr. George A. Pruitt
 THOMAS EDISON STATE
 COLLEGE

Margaret Pyles
 BRISTOL-MYERS SQUIBB
 COMPANY

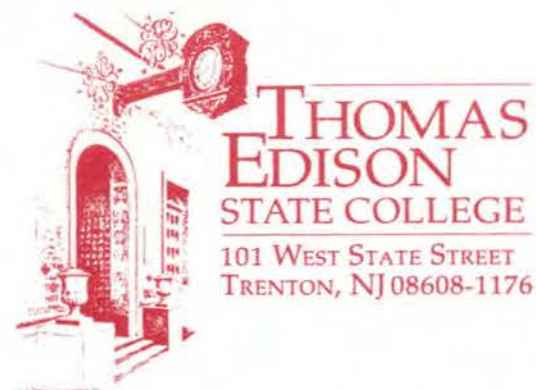
S. John Quattrone
 S. JOHN QUATTRONE
 ASSOCIATES

Michael J. Scheiring
 THOMAS EDISON STATE
 COLLEGE

Thomas Seessel
 SEEDCO

John P. Thurber
 THOMAS EDISON STATE
 COLLEGE

Linda Villa
 AT&T



DEAR SUPPORTERS:

It is with fond regards and deepest appreciation that I welcome you to the Fifth Annual Gala of the Thomas Edison State College Foundation. For those of you who have made this an annual tradition, thanks for your continued support. To those of you who are joining us for the first time, I hope the time you spend with your colleagues and friends this evening will lead you to a better understanding of the College's mission to serve adult learners.

As chairman of the Thomas Edison State College Foundation, I would like to take this opportunity to reaffirm our Foundation's commitment to further the College's mission and goals through increased giving by individuals and businesses.

Thomas Edison State College brings the highest quality education to adults who have the inspiration, self-discipline and energy to complete degrees despite the many conflicting demands of career, family and community. We must all continue to join together—educators, community leaders, students, colleagues and friends—to take Thomas Edison into the future. The Foundation is constantly working to build a solid endowment of support and to raise significant funds for the College's quality programs and services. We need your help in our mission to assist the College in meeting new challenges.

I want to thank you all for your support of the College through this annual Gala. A special thanks to the Foundation Gala co-chairs and committee for making this evening possible.

Have a wonderful time tonight.

Respectfully,

Nicholas L. Carnevale
 CHAIRMAN
 THOMAS EDISON STATE COLLEGE FOUNDATION

THOMAS EDISON STATE COLLEGE BOARD OF TRUSTEES

CHAIRMAN
GEORGE L. FRICKE
Bell Atlantic (RET.)

VICE CHAIRMAN
RICHARD W. ARNDT
AMERICAN CANCER
SOCIETY

Fred J. Abbate
New Jersey Utilities
ASSOCIATION

Nicholas L. CARNEVALE
WALTER B. HOWE, INC.
(RET.)

IDA B. HAMMOND '78
New Jersey Department
of Education (RET.)

Lt. William Kisby
W.R.K. Limited

Wendy B. Logan
Johnson & Johnson

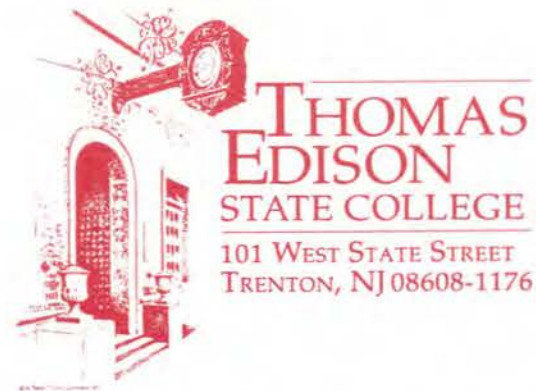
E. HARVEY MYERS
E. HARVEY MYERS
ARCHITECT

CAROLE A. NERLINO
FINANCIAL CONSULTANT

THOMAS M. O'Neill
THE PARTNERSHIP FOR
NEW JERSEY

DR. GEORGE A. PRUITT
THOMAS EDISON STATE
College

Cordell TROTMAN
UNIVERSITY OF MEDICINE
AND DENTISTRY OF NEW
JERSEY



DEAR FRIENDS OF THOMAS EDISON STATE COLLEGE:

I would like to extend greetings and a heartfelt welcome as you join us for our Fifth Annual Gala. It is the continued support of individuals like you that make this College the leader in higher education that it is today.

It is with great pleasure that I extend a special welcome to our two distinguished "Spirit of Edison" Award winners. Paula Vaughan '90 and Richard J. Gillespie are two individuals whose singular accomplishments and contributions in the community truly reflect the spirit of Thomas Alva Edison and Thomas Edison State College.

As we prepare to mark our 25th Anniversary, there are many exciting things happening at Thomas Edison State College.

- We broke ground on a capital project that will transform five historic townhouses into a state-of-the-art programmatic facility. When the ribbon is cut toward the end of 1997, we will add 48,000 square feet of renovated space combining the historic beauty of the early 1900s with the technology of the 21st century, including electronic classrooms and corporate-style conferencing facilities.
- Gov. Christine Todd Whitman signed an Executive Order transferring the New Jersey State Library to the College, effective in July 1996. This affiliation has the potential of transforming the way information is accessed throughout New Jersey.
- Through the work of the John S. Watson Institute for Public Policy, the College has made tremendous progress in developing public policy initiatives and in establishing itself as a recognized center in this arena.
- In September, we began working with our first public class in the Master of Science in Management program.
- Our newly inaugurated Web page has received national recognition for its design and its utility in serving the public—over 100 people per day visit the College's Web site.

We are proud of these and other achievements, and are challenged by the prospects of a bright future for Thomas Edison State College.

Thomas Edison offers mature adults the opportunity to pursue collegiate education of the highest quality. I know I can count on you to support the advancement of the unique mission of Thomas Edison State College. Your partnership with the College is vital to the future of this institution and the adult learners we serve.

Thank you for joining us on this special night.

WARMEST REGARDS,

GEORGE A. PRUITT
PRESIDENT
THOMAS EDISON STATE COLLEGE

THOMAS EDISON STATE COLLEGE FOUNDATION 1996 GALA ACKNOWLEDGMENTS

THOMAS EDISON STATE COLLEGE, THE THOMAS EDISON STATE COLLEGE FOUNDATION AND THE GALA COMMITTEE GRATEFULLY ACKNOWLEDGE AND THANK EVERYONE WHO PARTICIPATED IN "GATSBY & FRIENDS." A SPECIAL THANK YOU GOES TO THE FOLLOWING COMPANIES AND INDIVIDUALS WHO PROVIDED UNDERWRITING FOR THE PRINTING OF THE INVITATIONS AND THE GALA PROGRAM BOOK, PUBLIC SERVICE ANNOUNCEMENTS, COCKTAIL HOUR MUSIC AND ALL OF THE WONDERFUL GIFTS FOR OUR SILENT AUCTION. THANKS, TOO, TO THE MANY OTHER ADVOCATES OF THE COLLEGE WHO SO GENEROUSLY GAVE OF THEIR TIME OR SERVICE.

ALL OF OUR SILENT AUCTION CONTRIBUTORS

AD JOURNAL SPONSORS

THE TIMES

THE TRENTONIAN

THE PRINCETON PACKET

THE WITHERSPOON STREET
TRAVELING MEDICINE SHOW

ROD ANDERSON	CLARINET
DR. STEVE FARMER	TROMBONE
DR. LEN GROSSMAN	TRUMPET
TOM MCFARLAND	DRUMS
SAM MORGANSTERN	TUBA
RAY WHEARTY	PIANO

UNDERWRITERS

DAVID SARNOFF RESEARCH CENTER
SUMMIT BANK

THOMAS EDISON STATE COLLEGE ALUMNI ASSOCIATION BOARD OF DIRECTORS

PRESIDENT ADELE K. ELLIS, ASM '88, B.A. '94	ACTING SECRETARY B. J. RODGERS B.A. '95	DIRECTORS JANUARY 1, 1996 - DECEMBER 31, 1997
PRESIDENT-ELECT PAUL A. HAYS BSAST '89	TREASURER CHARLOTTE L. COONEY BSBA '91	KEVIN SULLIVAN BSBA '94
VICE PRESIDENT ALUMNI MEMBER RELATIONS PAULA VAUGHAN BSBA '90	IMMEDIATE PAST PRESIDENT M. JANE COULT B.A. '86	ASSOCIATE DIRECTORS JANUARY 1, 1996 - DECEMBER 31, 1996
VICE PRESIDENT DEVELOPMENT ONDINA A. JEFFERS B.A. '82	DIRECTORS JANUARY 1, 1995 - DECEMBER 31, 1996	GERALD BERKE B.A. '94
VICE PRESIDENT PROGRAMS NANCY GOEHRIG A.A. '86	THOMAS FASH A.A. '93	HOWARD E. BUTT BSHS '95
	PATRICIA A. SLAYMAKER BSBA '90	ROBERT J. CERCO B.A. '95
		JOSEPH LINSKEY B.S. '86
		GAIL ANN PALATINE BSAST '91
		MICHAEL J. SMILACK BSBA '95



Apparently, Thomas Edison
knew one or two
things about inventing.

*"The first step is an intuition-
and comes with a burst,
then difficulties arise.
Time, hard work, and some
good luck are necessary."*

And advertising.

Gillespie

P.O. Box 3333 Princeton, NJ 08540 609.895.0200
Advertising • Design • Direct Marketing • Magazine Marketing • Public Relations
Coming Soon: <http://www.gillespie.com>

Best Wishes From Your Friends at

ROMA FEDERAL SAVINGS BANK

MAIN OFFICE

485 Hamilton Avenue • Trenton, N.J. 08609 • Tel. (609) 599-9301

MERCERVILLE OFFICE

500 Route 33
Mercerville, N.J. 08619
Tel. (609) 587-7555

YARDVILLE OFFICE

4500 S. Broad Street
Yardville, N.J. 08620
Tel. (609) 585-4404

WEST TRENTON OFFICE

79 W. Upper Ferry Road
W. Trenton, N.J. 08628
Tel. (609) 883-8140

HAMILTON CENTER CITY OFFICE

1155 Whitehorse-Mercerville Road
Hamilton, N.J. 08619
Tel. (609) 585-6300

SOUTH TRENTON OFFICE

1450 S. Broad Street
Trenton, N.J. 08610-6236
Tel. (609) 396-8110

OUR SERVICES INCLUDE:



ACCOUNTS:
Money Market & Passbook
Savings Certificates
Xmas & Vacation Clubs
NOW Checking
IRA Accounts

LOANS:
Mortgage Loans
FHA Improvement Loans
Education Loans
Account Loans
Home Equity Loans

OTHER:
Money Orders
Travelers Cheques
Foreign Remittances
Safe Deposit Boxes
Direct Deposit





Congratulations
Paula Vaughan
and Richard Gillespie

from
Thomas Edison State College

EMBODYING THE SPIRIT OF EDISON

THE THOMAS EDISON STATE COLLEGE FOUNDATION IS PLEASED TO PRESENT THE THIRD ANNUAL "SPIRIT OF EDISON" AWARDS. THESE PRESTIGIOUS AWARDS RECOGNIZE BOTH A GRADUATE AND A COMMUNITY LEADER WHOSE CREATIVITY, COMMITMENT AND ENTREPRENEURIAL SPIRIT REFLECT THE PIONEERING GENIUS OF THOMAS ALVA EDISON. THIS YEAR'S AWARDEES ARE PAULA VAUGHAN, '90, AND RICHARD J. GILLESPIE (SEE BIOGRAPHIES ON THE PAGES THAT FOLLOW).

SPIRIT OF EDISON AWARDS CRITERIA

THE SPIRIT OF EDISON AWARDS ARE PRESENTED EACH YEAR BY THE THOMAS EDISON STATE COLLEGE FOUNDATION. THE AWARDS RECOGNIZE A COMMUNITY LEADER AND AN ALUMNA OR ALUMNUS WHO EMBODY THE COMMITMENT TO INNOVATION, CONCERN FOR PUBLIC GOOD AND THE SPIRIT OF EXCELLENCE ASSOCIATED WITH THOMAS ALVA EDISON AND THE MISSION OF THOMAS EDISON STATE COLLEGE. GIVEN THE GLOBAL NATURE OF THOMAS EDISON'S DISTANCE EDUCATION PROGRAMS, RECOGNITION IS GIVEN THOSE WHO HAVE MADE A DIFFERENCE AT THE LOCAL, NATIONAL AND INTERNATIONAL LEVEL.

SPIRIT OF EDISON AWARD RECIPIENTS ARE CHARACTERIZED BY:

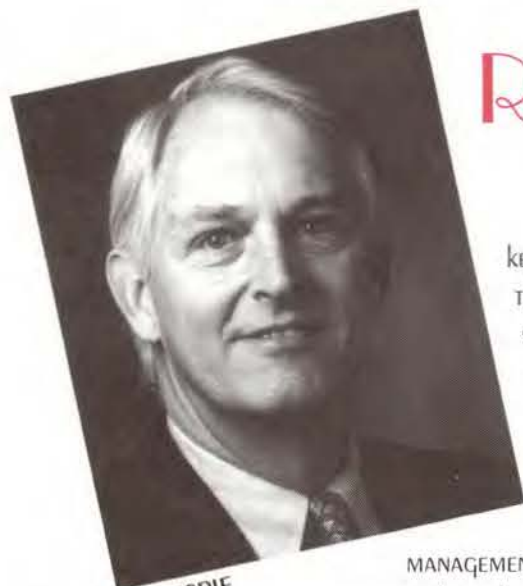
- A HIGH STANDARD OF EXCELLENCE, INNOVATION AND IMAGINATION IN THEIR CAREERS;
- DEDICATION TO HUMANITARIANISM AND SERVING THE PUBLIC GOOD;
- DEVOTION TO THE IDEALS OF SELF-DISCIPLINE, HARD WORK AND PERSISTENCE IN THE PURSUIT OF EXCELLENCE;
- ENTHUSIASM FOR THE IMPROVEMENT OF OUR QUALITY OF LIFE THROUGH THE CONTINUED AVAILABILITY OF HIGHER EDUCATION FOR ADULTS;
- DISTINGUISHED SERVICE AT THE COMMUNITY, NATIONAL OR INTERNATIONAL LEVEL.



PREVIOUS RECIPIENTS

1994
Frank Z. Hawpylo, '79
John P. Neary

1995
Steven E. deSouza, '76
James Kilgore



GILLESPIE

RICHARD J. GILLESPIE

keting directions that have aided substantial client growth.

As an agency executive, his views on

management and structure have been widely sought. He has often lectured before both industry groups and at colleges on his firm beliefs that creative leadership, strategic planning and sound business practices are important partners for dynamic agency growth.

He founded Gillespie Public Relations in 1985, and Magazine Marketing, Inc., an innovative counseling and advertising promotion company dedicated specifically to the publishing community, the following year. In the late 80s, recognizing the changing needs of today's communication world, he began a process of re-engineering his firm toward full marketing integration, encompassing advertising, direct response and database marketing, sales promotion and public relations, renaming the company Gillespie.

Today, the firm is the 75th largest general advertising agency in the U.S., the

12th largest direct response agency worldwide, one the 30 largest sales promotion agencies and has one of the largest public relations practices in the New Jersey/Philadelphia market. The agency also has been awarded the Geothermal Heat Pump Consortium account in 1996.

A graduate of Duquesne University, he joined Dow Jones right after college as a copywriter for the firm's promotion department. Over the next seven years, he moved quickly, becoming advertising and promotion manager for the company's education division, and at the age of 26, corporate public relations director.

Dick is a member of the board of the Thomas Edison State College Foundation, an advisory board member to the Rider University School of Business, a member of the board of trustees of Catholic Charities of Trenton and has been

appointed to the New Jersey District Export Council of the U.S. Secretary of Commerce. He is the founder of the New Jersey Communications, Advertising & Marketing Association (CAMA), the Princeton Christian Businessman's Association and the annual Bernard Kilgore Memorial Lecture at Rider University. Dick is also a former governor of the Philadelphia Chapter of the American Association of Advertising Agencies.

The father of six children, he lives in Pennington, N.J., with his wife, Donna.



PAULA VAUGHAN '90



VAUGHAN

When Paula Vaughan gets involved, she really gets involved. Paula, who is being honored tonight as the alumni recipient of the Spirit of Edison Award, is a very active member of the Thomas Edison State College Alumni Association. The 1990 graduate has set a few ambitious goals as an association board member—including fundraising and friend raising.

A strong supporter of the College, Paula is a member of the Patron's Circle which includes donors who give gifts over \$1,000. Her financial support of the College, however, is only the beginning. Paula, who is a vice president for Prudential, has volunteered her skills as a member of the Alumni Association's Major Donor Advisory Committee.

Paula knows that it takes more than financial support to make an institution strong. In addition to her

fundraising activities, she is friend raising for the College as vice president of Alumni Member Relations and cochair of the Regional Meetings Committee. As a member of the latter, she has worked on

the re-invo-ration of regional chapters and corporate affiliates for alumni.

Paula, who has been with Prudential for over 26 years, has been a vice president since 1987.

Currently, she is in Change Management. It was her role in management

that ultimately lead her to participate in the College's Alumni Association.

"I travel with Prudential and was at a nationwide program for women in leadership roles when I met Annette Singer (former director of Alumni Affairs at Thomas Edison)," Paula explained. "I told her I wanted to be involved and the rest is history."

Paula first learned about Thomas Edison State

College when she heard someone from the College talking about its programs on a Sunday morning radio show. She had begun her education in 1966 and had credits equal to about two and a half years of a college education when she enrolled in Thomas Edison in 1989. Using testing and the Program on Noncollegiate Sponsored Instruction (PONS), Paula was able to complete degree requirements in less than a year.

"When I went looking for a way to get my degree, it wasn't to increase my chances of promotion, and it wasn't to change careers," she explained. "It was to give me a sense of accomplishment around what I want to be a lifetime of learning."

Recently, Paula was selected as a member of the 1996 class of Leadership America, a national, not-for-profit organization that recognizes, educates and connects accomplished and diverse women to increase their individual and collective impact globally. Only 100 women are selected

each year. She also serves as vice president of the Newark Emergency Services for Families. Paula, who considers herself a true animal lover, lives in Parsippany, N.J., with her dog and seven cats. She has a grown daughter, Marnie, who is studying culinary in Chicago, Ill.

In her spare time, Paula likes to unwind with hand crafts including needle work and crocheting. But it is her commitment to the College and its Alumni Association that's keeping her busy—and involved now.

"Thomas Edison State College provided an ideal opportunity to mesh my education goals with a busy lifestyle," she said. "Belonging to the Alumni Association gives me a chance to help the College expand its reach and encourage others in their education pursuits."

AT&T
and Thomas Edison State College,
meeting the future together.



THOMAS EDISON STATE COLLEGE STEPPIN' INTO THE 21ST CENTURY

THE ERA OF THE GREAT "GATSBY AND FRIENDS" WAS ONE OF ADVENTURE AND EXPLORATION. IT WAS AN ERA OF TOP HATS AND WHITE GLOVES, OF SPEAK EASIES AND "NEW" MODEL TS; IT WAS AN ERA OF HOLDING ONTO TRADITION WHILE EXPLORING POSSIBILITIES FOR THE FUTURE.

AS THOMAS EDISON STATE COLLEGE PREPARES TO BEGIN ITS 25TH YEAR, THAT ADVENTUROUS SPIRIT LIVES ON. ADULT LEARNERS ARE ON A QUEST OF DISCOVERY AS THEY EXPLORE THEIR EDUCATIONAL OPPORTUNITIES; THE COLLEGE IS ON A JOURNEY OF EXPLORATION AS IT PURSUES TECHNOLOGIES THAT WILL TAKE HIGHER EDUCATION INTO THE 21ST CENTURY.

THOMAS EDISON STATE COLLEGE, WHICH OFFERED IN THE 20TH CENTURY WHAT ONCE WOULD HAVE BEEN CONSIDERED A FUTURISTIC VIEW OF HIGHER EDUCATION, CONTINUES TO PURSUE NEW HORIZONS. WITH TECHNOLOGIES LIKE THE INTERNET AND THE WORLD WIDE WEB, THE COLLEGE IS ACCESSIBLE TO STUDENTS ACROSS THE COUNTRY AND AROUND THE WORLD. THE COLLEGE CURRENTLY OFFERS THE MASTER OF SCIENCE IN MANAGEMENT, BACHELOR AND ASSOCIATE IN ARTS, BACHELOR OF SCIENCE IN BUSINESS ADMINISTRATION, ASSOCIATE IN SCIENCE IN MANAGEMENT, BACHELOR AND ASSOCIATE IN SCIENCE IN APPLIED SCIENCE AND TECHNOLOGY, BACHELOR OF SCIENCE IN HUMAN SERVICES, BACHELOR OF

SCIENCE IN NURSING, ASSOCIATE IN SCIENCE IN PUBLIC AND SOCIAL SERVICES, ASSOCIATE IN SCIENCE IN NATURAL SCIENCE AND MATHEMATICS, AND ASSOCIATE IN APPLIED SCIENCE IN RADIOLOGIC TECHNOLOGY.

CHALLENGING THE BOUNDARIES

HELPING STUDENTS TO CHALLENGE THEIR BOUNDARIES AND ACHIEVE THEIR GOALS HAS ALWAYS BEEN AT THE HEART OF THE THOMAS EDISON STATE COLLEGE MISSION. DISTANCE & INDEPENDENT ADULT LEARNING (DIAL) OPTIONS SUCH AS GUIDED STUDY COURSES, WHICH CAN BE TAKEN AT HOME, THE ON-LINE COMPUTER CLASSROOM, WHERE STUDENTS AND FACULTY "MEET" ON THE SCREENS OF THEIR PERSONAL COMPUTERS AND CONTRACT LEARNING, INDEPENDENT STUDY FOR THOSE HARD-TO-FIND COURSES, BRING THE HIGHEST QUALITY EDUCATION TO ADULTS WHEREVER THEY LIVE OR WORK. THE COLLEGE'S COMPUTER ASSISTED LIFELONG LEARNING (CALL) NETWORK, CALLED "ONE OF THE BRIGHTER STARS OF HIGHER LEARNING" BY THE NEW YORK TIMES, ENABLES ADULTS TO INQUIRE, APPLY, ENROLL, ACCESS RECORDS, "CHAT" WITH ADVISORS AND TAKE ADVANTAGE OF MANY OTHER SERVICES USING A PERSONAL COMPUTER AND A MODEM.

THOMAS EDISON'S DEGREE PATHWAYS PROGRAM, CREATED TO MEET THE NEED FOR FOUR-YEAR COLLEGE SERVICES IN THE SOUTHERN REGIONS OF NEW JERSEY, HAS QUICKLY SPREAD THROUGHOUT THE STATE. BY THE END OF THIS FISCAL YEAR, IT IS ANTICIPATED THAT EVERY COUNTY COLLEGE WILL HAVE SIGNED-ON TO THIS UNIQUE PROGRAM THAT OFFERS TWO-YEAR COLLEGE GRADUATES A SEAMLESS TRANSFER TO THOMAS EDISON'S BACCALAUREATE PROGRAMS.

REACHING OUT TO THE BUSINESS COMMUNITY IS ANOTHER WAY THOMAS EDISON STATE COLLEGE PROVIDES ACCESS TO MEN AND WOMEN SEEKING A COLLEGE DEGREE. THROUGH THE OFFICE OF CORPORATE-HIGHER EDUCATION PROGRAMS, ORIGINALLY THE CENTER FOR CORPORATE AND PUBLIC PARTNERSHIPS, THOMAS EDISON HAS CULTIVATED CORPORATE CLIENTS SINCE 1983. WORKING THROUGH THE OFFICE OF CORPORATE-HIGHER EDUCATION PROGRAMS AND IN CONJUNCTION WITH PONS (PROGRAM ON NONCOLLEGIATE SPONSORED INSTRUCTION), BUSINESSES ARE ABLE TO DOCUMENT THE CREDIT VALUE OF INSERVICE PROGRAMS, CREATE TAILORED PROGRAMS TO MEET EMPLOYEES' NEEDS AND ACCOMMODATE THE CHANGING WINDS OF THE CORPORATE

CULTURE THROUGH EDUCATION. SINCE 1983, A CORPORATE-HIGHER EDUCATION COLLOQUIUM HAS BEEN HELD TO BRING TOGETHER EXPERTS FROM ACROSS THE NATION TO FURTHER THESE BENEFICIAL PARTNERSHIPS.

EXPANDING OUR HORIZONS

THOMAS EDISON STATE COLLEGE HAS LEFT ITS MARK IN OTHER AREAS OF ACADEMIA, AS WELL. THE NATIONAL INSTITUTE ON THE ASSESSMENT OF EXPERIENTIAL LEARNING, CREATED IN 1989 AS THE ONLY NATIONAL PROGRAM DEDICATED TO ADVANCING THE FIELD OF EXPERIENTIAL LEARNING, ANNUALLY ATTRACTS AN IMPRESSIVE GROUP OF EDUCATORS FROM AROUND THE GLOBE.

THE JOHN S. WATSON INSTITUTE FOR PUBLIC POLICY PARTNERS THOMAS EDISON WITH DECISION-MAKERS IN THE PUBLIC AND PRIVATE SECTOR TO PROVIDE POLICY ANALYSIS AND OTHER TECHNICAL ASSISTANCE. A NONPARTISAN, INDEPENDENTLY FUNDED RESEARCH OFFICE, THE "WATSON INSTITUTE" IS AN OUTGROWTH OF THE TRENTON OFFICE OF POLICY STUDIES (TOPS), WHICH IS NOW UNDER THE WATSON INSTITUTE'S UMBRELLA. TOPS, A COLLEGIATE-MUNICIPAL COLLABORATION BETWEEN THE COLLEGE

AND THE CITY OF TRENTON TO ANALYZE EMERGING PUBLIC POLICY ISSUES WHICH IMPACT THE CITY, HELPS TO FORMULATE RECOMMENDATIONS AND PLANS FOR ADDRESSING MUNICIPAL PROBLEMS. TOPS HAS GARNERED SEVERAL LOCAL, STATE AND NATIONAL AWARDS. IN ADDITION, THE CENTER FOR THE URBAN ENVIRONMENT (CUE) WAS CREATED AS AN ACTION-ORIENTED, CLIENT-CENTERED AND PARTNERSHIP-DRIVEN PROGRAM. AS SUCH, CUE PROVIDES A RANGE OF ASSISTANCE TO STATE, COUNTY AND CITY GOVERNMENTS AS WELL AS NON-PROFIT ORGANIZATIONS WORKING TO IMPROVE THE ENVIRONMENT. THE COLLEGE ALSO IS WORKING WITH THE CITY THROUGH THE TRENTON MANAGEMENT REVIEW COMMISSION TO PROVIDE PRIVATE/PUBLIC SUPPORT IN UNDERTAKING MANAGEMENT REVIEW OF CITY OPERATIONS TO IMPROVE THE PRODUCTIVITY OF TRENTON GOVERNMENT.

THE COLLEGE ASSISTED THE STATE OF NEW JERSEY BY LOANING AN EXECUTIVE TO SERVE AS THE FIRST DIRECTOR OF THE GOVERNOR'S MANAGEMENT REVIEW COMMISSION. THE COMMISSION WAS CHARGED WITH UNDERTAKING A STATEWIDE AUDIT OF GOVERNMENT, WHICH RESULTED IN RECOMMENDATIONS SAVING \$1.8 BILLION TO NEW JERSEY CITIZENS. ALSO ON THE STATE LEVEL, THE COLLEGE HAS PARTNERED WITH THE NEW JERSEY INSTITUTE OF TECHNOLOGY ON HINT (HEALTHCARE INFORMATION NETWORK TECHNOLOGIES), A MILLION DOLLAR STUDY ON UTILIZING TECHNOLOGY IN THE DELIVERY OF HEALTHCARE TO MAKE RECOMMENDATIONS THAT WILL RESULT IN STREAMLINING AND REDUCING HEALTHCARE ADMINISTRATIVE COSTS.

IN A HISTORIC MOVE WITHOUT PARALLEL IN OTHER STATE GOVERNMENTS, GOV. CHRISTINE TODD WHITMAN SIGNED AN EXECUTIVE ORDER WHICH TRANSFERRED THE NEW JERSEY STATE LIBRARY FROM THE DEPARTMENT OF EDUCATION TO THOMAS EDISON STATE COLLEGE ON JULY 1, 1996. THIS AFFILIATION TRANSFORMED THE WAY INFORMATION IS ACCESSED THROUGHOUT THE GARDEN STATE.

REMEMBERING OUR HISTORY, CREATING OUR FUTURE

DURING ITS IMPRESSIVE TENURE, THE COLLEGE HAS HAD ONLY THREE PRESIDENTS. THE FIRST WAS DR. JAMES DOUGLAS BROWN, JR., WHO SERVED FROM THE COLLEGE'S ORIGINAL OFFICES ON NORTH OLDEN AVENUE IN EWING TOWNSHIP. DR. LARRAINE R. MATUSAK SUCCEEDED DR. BROWN IN 1978, SHORTLY BEFORE THE COLLEGE MOVED TO THE HISTORIC KELSEY BUILDING ON W. STATE STREET IN TRENTON. FOURTEEN YEARS AGO, DR. GEORGE A. PRUITT ACCEPTED THE APPOINTMENT AS



PRESIDENT. IT IS DR. PRUITT WHO HAS NOT ONLY CHARTED THE COURSE, BUT ALSO HAS STEERED THE COLLEGE TOWARD THE FUTURE. HONORED BY THE EXXON FOUNDATION AS ONE OF THE NATION'S MOST EFFECTIVE COLLEGE PRESIDENTS, HE WAS CITED AT THE 1993 FOUNDATION GALA FOR OUTSTANDING SERVICE AND UNFAILING DEDICATION TO THE INSTITUTION AND ITS STUDENTS DURING HIS 10TH YEAR WITH THE COLLEGE.

THE COLLEGE, ITS LEADERSHIP AND PROGRAMS ARE A TRIBUTE TO ITS ILLUSTRIOUS HISTORY. EVEN THE KELSEY BUILDING IS ALIVE WITH HISTORY. ORIGINALLY BUILT BY HENRY COOPER KELSEY, A BANKER AND POLITICIAN WITH AN APPRECIATION

FOR THE ARTS, THE KELSEY BUILDING WAS DEDICATED TO HIS WIFE, PRUDENCE TOWNSEND KELSEY, WHO DIED IN 1904. THE BUILDING WAS DEDICATED IN 1911 AS A SCHOOL FOR INDUSTRIAL ARTS. IN 1979, WHEN THOMAS EDISON STATE COLLEGE WAS LOOKING TO MOVE FROM ITS CRAMPED OFFICE SPACE IN THE FORRESTAL CENTER OUTSIDE OF PRINCETON, THE STATE WAS LOOKING FOR AN APPROPRIATE TENANT FOR THE LANDMARK KELSEY BUILDING, WHILE THE CITY SOUGHT TO PRESERVE THE BUILDING'S HISTORIC USE AS A SCHOOL. ALL THREE CONCERNS WERE BROUGHT TOGETHER WHEN STATE SENATE



PRESIDENT Joseph P. Merlino persuaded GOV. BRENDAN T. BYRNE THAT THE BRICK TOWNHOUSES, ALONG WITH THE KELSEY BUILDING, WERE IDEAL FOR COLLEGE EXPANSION. AT A TIME WHEN DEVELOPERS WERE THREATENING THE RESIDENTIAL CHARACTER OF THE STATE HOUSE HISTORIC DISTRICT, THAT MARRIAGE OF THE BLOCK'S ARCHITECTURAL GEM AND ITS

LESS SHOWY NEIGHBORS SATISFIED THE COLLEGE, THE STATE AND THE CITY.

TODAY, THOMAS EDISON STATE COLLEGE'S PRESENCE HAS EXPANDED THROUGHOUT THE CITY AND THE STATE. THE COLLEGE'S TRENTON CAMPUS EMBRACES THE ACADEMIC CENTER AT 167 E. HANOVER ST. AND THE KUSER MANSION AT 315 W. STATE ST., HOME OF THE JOHN S. WATSON INSTITUTE FOR PUBLIC POLICY, THE OFFICE OF CORPORATE-HIGHER EDUCATION PROGRAMS, HUMAN RESOURCES AND DISTANCE & INDEPENDENT ADULT LEARNING. THE COLLEGE ALSO MAINTAINS A CAMPUS IN CAMDEN. NOW, ANOTHER PHASE OF THE COLLEGE'S EXPANSION HAS BEGUN. RENOVATIONS ARE UNDER WAY ON THE FIVE HISTORIC TOWNHOUSES ADJACENT TO THE KELSEY BUILDING. THE LONG-VACANT TOWNHOUSES WILL BE RESTORED TO THEIR FORMER GLORY BY THE FALL OF 1997. BUT, PRESERVATION OF THE 19TH CENTURY STRUCTURES, WITH SOME OF THE NATION'S FINEST

GREEK REVIVAL INTERIORS, IS NOT THE ONLY OBJECTIVE. THE PROJECT WILL ENABLE THE COLLEGE TO ACQUIRE 21ST CENTURY TECHNOLOGY, FROM ELECTRONIC CLASSROOMS AND COMPUTER LABS TO A CORPORATE-STYLE EDUCATION CONFERENCE ROOM AND OTHER FACILITIES LINKING STUDENTS AND FACULTY AT DOZENS OF COLLEGES THROUGHOUT THE COUNTRY AND AROUND THE WORLD.

THOMAS EDISON STATE COLLEGE, HOWEVER, ISN'T CONTAINED BY BRICKS AND MORTAR. THE COLLEGE'S REACH IS FELT BY ALL THOSE WHO DARE TO STEP INTO THE FUTURE AND DISCOVER THAT WHAT ONCE COULD BE CONSIDERED FANTASY BY SOME—THE GOAL OF ACHIEVING A DEGREE—NOW CAN BE REALITY. THE ADVENTURE ON WHICH THE COLLEGE HAS EMBARKED IS FAR FROM OVER. IN THE TRUE SPIRIT OF INSPIRATION AND EXPLORATION, THOMAS EDISON STATE COLLEGE WILL CONTINUE TO TAKE HIGHER EDUCATION TO NEW HORIZONS.

KPMG Peat Marwick LLP
is proud to invest in higher education
by supporting

THE THOMAS EDISON
STATE COLLEGE FOUNDATION'S

"Gatsby & Friends" Gala



THE GLOBAL LEADER SM

KPMG's New Jersey Higher Education Practice
Paul D. Merrill, Partner in Charge • (609) 896-2100

KPMG Peat Marwick LLP is the U.S. member firm of KPMG International.



Lynch, Jones & Ryan, Inc.

We are Proud to Support
the Thomas Edison State
College Foundation
Annual Gala

John J. McCann
Executive Vice President

345 Hudson Street New York, NY 10014
Telephone 212 243 3137 Fax 212 645 0698

Member NYSE and other principal exchanges

*The Maurice T. Perilli
Foundation, Inc.*

We're Orchestrating All
Your Healthcare Needs.

R·W·J
Health Care Corp
 **HAMILTON**



ROBERT • WOOD • JOHNSON
UNIVERSITY HOSPITAL
 **HAMILTON**

HAMILTON
REGIONAL
HEALTH
NETWORK



Hamilton
Continuing
Care Center



LAKEVIEW
Child Center

TURNER



TURNER NJ

Experience...Commitment...Integrity



**Turner Construction Company
265 Davidson Avenue
Somerset, New Jersey 08873**

**John J. Fumosa
Vice President and
General Manager
Telephone (908) 627-8301**

**Douglas W. Diercksen
Manager of
Business Development
Telephone (908) 627-8304**

Mercer Medical Center

congratulates

Thomas Edison State College

for their ongoing commitment

to our community.



Mercer Medical Center
Advancing the Health of our Community

Mercer Medical Center • 446 Bellevue Avenue • Trenton, NJ 08618

AEGIS PROPERTY GROUP
is pleased to support
Thomas Edison State College Foundation's
1996 Annual Gala.

*Aegis Property Group is an established real estate company
which has provided Development, Project Management and Leasing Services
to Delaware Valley owners and users of property since 1980.*

AEGIS PROPERTY GROUP

1600 MARKET STREET, SUITE 1705 • PHILADELPHIA, PA 19103
215-568-5050 • TELEFAX 215-568-6525

Best Wishes

Richard & Susan Ingram

Thomas Edison
State College Foundation
For All the Good
Work You Do,
We Salute You!

PRINCETON, NEW JERSEY
PHONE (609) 452-0808
FAX (609) 452-1147

**JAMIESON
MOORE**
PESKIN & SPICER
COUNSELORS AT LAW

MORRISTOWN, NEW JERSEY
PHONE (201) 984-1616
FAX (201) 984-9549

The Power of Commitment



To the Spirit of Thomas Edison

Getting There Starts Here
**MERCER COUNTY
COMMUNITY COLLEGE**



CONGRATULATIONS TO THIS EVENING'S HONOREES!

Bess & John

S. John Quattrone Associates

*Financial and Estate Planning
Employee Benefit Programs*

123 Franklin Corner Road • Suite 203
Lawrenceville, NJ 08648
609-896-1222



***Congratulations to Richard Gillespie & Paula Vaughan
Spirit of Edison Recipients***

from

Maria P. Imbalzano

Christopher M. Pyne

and all the attorneys and staff at Stark & Stark

Floyd J. Carl
Vice President
Investment Officer

Wheat First Butcher Singer

Serving Investors Since 1934

One Summit Square, Ste. 302
Rt. 413 & Doublewoods Rd.
Langhorne, PA 19047

215.504.1805
1.800.504.9702
Fax 215.504.9719

Wheat First Butcher Singer is a trademark of Wheat, First Securities, Inc., Member NYSE

COMMUNITY BANKING AT ITS BEST

The STRENGTH of every community is enhanced by the personal involvement of dedicated individuals.

COMMUNITIES come to depend on these unique individuals who unselfishly contribute their time and expertise.

TRENTON SAVINGS BANK is pleased to join your friends and the community in recognizing your contribution to this worthy cause.

1-609-844-3100

Trenton
Savings Bank FSB

Community Banking At Its Best



MEMBER FDIC

Spalding Associates, Inc. 
INSURANCE & EMPLOYEE BENEFITS

*Congratulations to this year's
Spirit of Edison Recipients*

Richard J. Gillespie & Paula Vaughan

125-290 Village Boulevard • Princeton, NJ 08540
Phone 609-452-1200 • Fax 609-452-7768

THE THOMAS EDISON STATE COLLEGE ALUMNI ASSOCIATION

Salute one of its own...

Paula Vaughan '90
and
Richard J. Gillespie

American Educational Institute,

educating the insurance professional
for more than 25 years,
is proud to support

Thomas Edison State College



170 Mt. Airy Road, P.O. Box 356
Basking Ridge, NJ 07920
800-631-8183

❖
AT&T
Matching
Gifts
❖

Best Wishes from



**Bristol-Myers
Squibb Company**

D Training &
Development Center

*

*With Admiration for
Thomas Edison State College*

Don & Patti Conover

*

Committed to the Community.



WELCOME TO FIRST CLASS SERVICE

We believe in quality service, and we'd like to prove it to you. Our hours are built around your needs. There's no waiting for service; there's plenty of free parking, right at our door. And we offer total banking services, including safe deposit boxes. Supporting our local economy is what Commonwealth State Bank is all about. Come in and talk to us. We'd like you to get to know us. We think you'll like what we offer.

**COMMONWEALTH
CSB STATE BANK**

10 North Main Street • Yardley • 215-493-2100
3 Friends Lane at Newtown Yardley Road • Newtown
215-860-4203 • 609-396-8008



MEMBER FDIC



ESTABLISHED 1938
5 SECOND STREET • TRENTON, NJ 08611

QUALITY PRODUCTS FOR THE
CONSTRUCTION, INDUSTRIAL,
COMMERCIAL and RESIDENTIAL MARKETS

Telephones:
Trenton 695-6121 • Suburban 882-7070
Princeton 921-8482 • Burlington 298-6121
Bristol, Pa. 945-0445



14th LEGISLATIVE DISTRICT

900 Kuser Road • Hamilton, NJ 08619 • (609) 586-1330
7 Centre Drive • Suite 6 • Jamesburg, NJ 08831 • (609) 395-8260

STATE SENATOR
PETER INVERSO

ASSEMBLYMAN
PAUL KRAMER

ASSEMBLYWOMAN
BARBARA WRIGHT

Willing to listen...Ready to Act!!!

Helene Fuld Medical Center

PROUD TO SERVE OUR
CAPITAL COMMUNITY



**Helene Fuld
MEDICAL CENTER**

750 Brunswick Avenue • Trenton, NJ • 08638

Call our *FREE* Physician Referral Service
at (609) 695-DOCS.

Capitol Copy Service

116 West State Street • Trenton, New Jersey 08608 • 609.989.8776

Printing

▪
Copying

▪
Graphics

Congratulations
RICHARD GILLESPIE

***"Spirit of Edison
Award Recipient"***

from

JAPS-OLSON COMPANY

30 North 31st Avenue, Minneapolis, MN 55411

Congratulations

DOUGLAS H. PALMER,
MAYOR, CITY OF TRENTON

Trenton Training Works, Inc.

John P. Foster
Consultant

25 Upper Ferry Rd. • Trenton, NJ 08628
phone: 609-883-4383 email: FosterJP@aol.com

609-393-5545 609-393-5026

AMOROSO
FLOWER SHOP, INC.

212 S. BROAD STREET TRENTON, N.J. 08608



SPECIALIZING IN
HOT & COLD BUFFETS

BEST FOOD
SPECIALTY INC.
Nancy Orlandi
President

"BE A GUEST AT YOUR OWN PARTY"

3 DAYTON ST • TRENTON NJ 08610

394-2552

By Appointment

MARIAGNES E. LATTIMER, Ph.D.-BCD
CLINICAL SOCIAL WORKER
DIPLOMATE IN CLINICAL SOCIAL WORK
PROFESSOR EMERITUS • RUTGERS UNIVERSITY

800 Lincoln Ave. East
Suite # 226
Cranford, NJ 07016

908-276-3551

Edison- a dynamic college!

Ellie Spiegel

Donald J. Loff
Senior Vice President Investments

PaineWebber

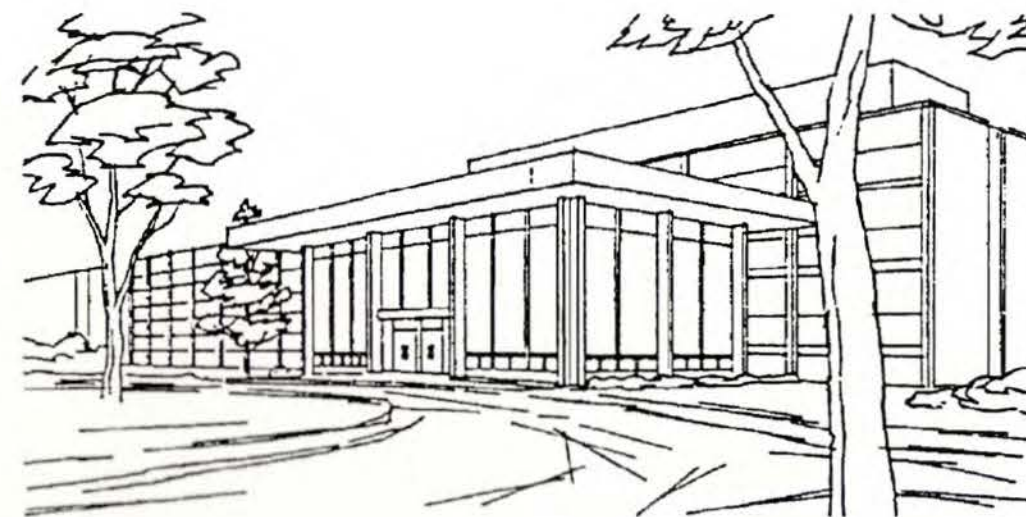
PaineWebber Incorporated
100 Overlook Center, Suite 101
Princeton, NJ 08540
609 951-5603
800 257-5141
609 452-1891 Fax

Brian S. Bennett
General Manager



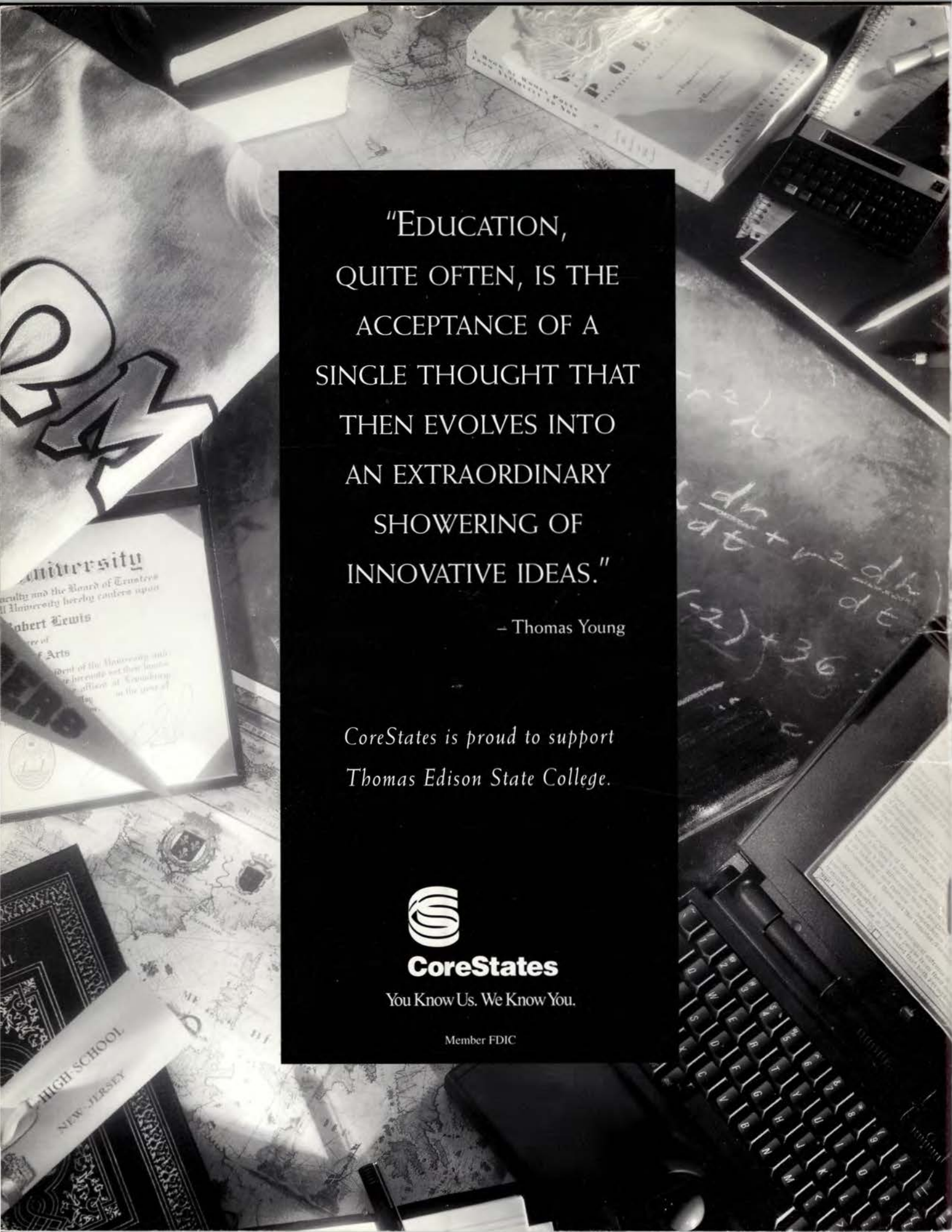
Lawrence Lexus
3333 Route #1
Lawrenceville, NJ 08648
Phone: (609) 243-7077
Fax: (609) 987-9156
<http://www.lexusdealer.com/lawrence>

Developing innovative technologies that change our world



CN 5300
Princeton, NJ 08543-5300
609-734-2000

Sarnoff
David Sarnoff Research Center
Subsidiary of SRI International



"EDUCATION,
QUITE OFTEN, IS THE
ACCEPTANCE OF A
SINGLE THOUGHT THAT
THEN EVOLVES INTO
AN EXTRAORDINARY
SHOWERING OF
INNOVATIVE IDEAS."

— Thomas Young

*CoreStates is proud to support
Thomas Edison State College.*



CoreStates

You Know Us. We Know You.

Member FDIC