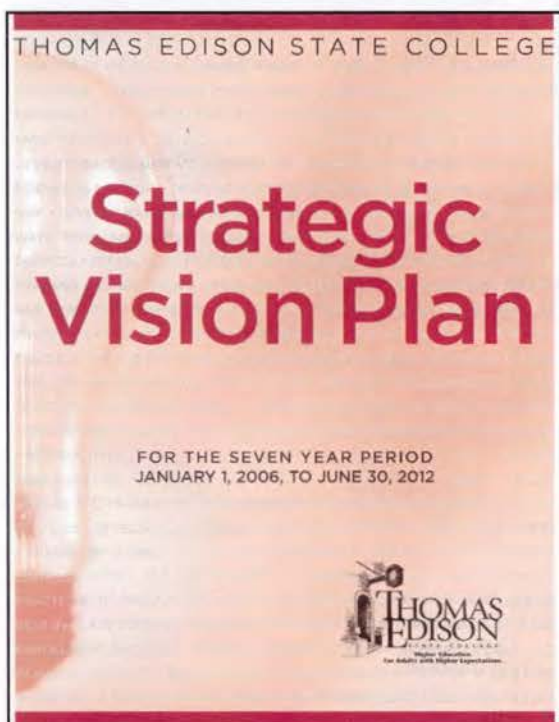


Staff Newsletter of Thomas Edison State College • February 2006



For a copy of the Strategic Vision Plan, visit the College intranet and click on the "Reports" tab on the intranet homepage, or contact your manager.



"We should all be able to draw a clear connection between what we do each day and the goals and strategies in the plan."

Dr. Penelope S. Brouwer
Vice President of Planning and Research

Sticking to the Plan

How the Strategic Vision Plan Will Secure Our Future in the Marketplace

You've heard about it many times in the past several months and, now, it's finally here.

Thomas Edison State College has begun implementing its Strategic Vision Plan, which is designed to better position the College for the future by transforming academic and overall operations in a way that has never been done before. The changing market has made such an ambitious effort a necessity.

"We face a substantial challenge with increasingly intense competition in the adult-learner marketplace, especially from for-profit institutions," said President Dr. George A. Pruitt. "Our competition is well-funded, highly efficient and has consistently captured significant market share over the past five years. This plan represents a bold new future for the College and will enable us to secure our preeminence as the leader in higher education for adults."

The plan, adopted at the December 2005 meeting of the Board of Trustees, covers a seven-year period that culminates in 2012 with the 40th anniversary of the College's founding. It is structured around four goal areas that articulate the direction in which the College will go over the next several years.

"This plan should guide the work of Thomas Edison State College," said Vice President of Planning and Research Dr. Penelope S. Brouwer, who worked closely with the Strategic Planning Steering Committee to conceptualize and finalize the plan. "We should all be able to draw a clear connection between what we do each day and the goals and strategies in the plan."

please see **Strategic Plan** on page 3

Dr. Pruitt Named to National Advisory Committee on Institutional Quality

Also Served as Co-Chair of Gov. Corzine's Higher Education Advisory Group

U.S. Secretary of Education Margaret Spellings has named Thomas Edison State College President Dr. George A. Pruitt to a fourth consecutive term on the National Advisory Committee on Institutional Quality and Integrity, the primary group that advises the secretary about post-secondary accreditation and quality.

Dr. Pruitt is the only college or university president from New Jersey to serve on the committee and is the committee's longest serving member. With his most recent appointment, Dr. Pruitt has now served in an advisory capacity to five U.S. secretaries of education, under three presidents representing both major political parties.

During the Clinton administration, Dr. Pruitt was twice appointed to the National Advisory Committee on Institutional Quality and Integrity by Education Secretary Richard Riley in 1994 and 1997, respectively. He was

reappointed to the committee in 2002 during President George W. Bush's first term by Education Secretary Rod Paige. In 1989, Dr. Pruitt was appointed to the National Advisory Committee on Accreditation and Institutional Eligibility, a precursor of the current committee, during the term of President George H. W. Bush by Education Secretary Lauro Cavazos.



In addition to his service at the national level, Dr. Pruitt recently played an advisory role in New Jersey, serving as co-chair of Gov. Jon S. Corzine's Higher Education Policy Group. The group was part of the governor's transition efforts and examined many of the proposals offered during Corzine's gubernatorial campaign.

The group developed a report containing 10 recommendations for the governor's consideration that focus on issues facing higher education in New Jersey.

Focus On: Ana I. Berdecia

"If we have no peace, it is because we have forgotten that we belong to each other."

- Mother Teresa



Ana I. Berdecia, director of Center for the Positive Development of Urban Children at The John S. Watson Institute for Public Policy of Thomas Edison State College, personifies the spirit reflected in the above quotation from Mother Teresa.

Berdecia, for example, was honored as the 2005 recipient of the Meta Griffith Community Service Award of the YWCA of Trenton during a ceremony at the Trenton War Memorial last year.

Under the auspices of the YWCA's "In Celebration of Women Awards," the women who receive these awards are recognized as vibrant role models who not only embody, but perpetuate the YWCA's mission to inspire others to support diversity and create opportunities for women's growth, leadership and power.

While finishing her undergraduate degree, Berdecia worked part time in the YWCA's after-school program and later returned to the "Y" to manage the Victim Assistance Program.

"This award is very meaningful to me because it comes from an organization that allowed me to work as an undergraduate student in the program, and later as a victim assistance coordinator and crisis counselor. The YWCA motto of empowering women and young girls helped frame my work ethic today," beamed Berdecia.

Berdecia received a baccalaureate degree in sociology with a minor in women's studies and master's in education with a concentration in early childhood leadership from The College of New Jersey. She also holds a New Jersey Standard Teaching Certificate in Preschool to Third Grade.

Watson Institute colleague and nominator Pamela Sims Jones honored Ana with an introduction during the award ceremony saying, "Ana's character is one of honesty, faith, conviction, courage, competency and credibility. I am extremely honored to present this award to Ana."

In addition to her exemplary volunteer record, Berdecia is at the helm of the Abbott Preschool Initiatives at the Watson Institute, which supports practitioners in the field of early childhood education. Berdecia also serves on the boards of the United Way of Greater Mercer County, United Way-Latino Vision Council, Children's Futures, and the NJ Professional Development Center for Early Care and Education. She is also co-chair of the New Jersey Child Care Economic Impact Council through her work at the Watson Institute.

"As one of the premier experts in early care and education, Ana is always developing innovative ways in which to bridge the voices of teachers, practitioners and families with policy initiatives that impact the positive development of New Jersey's children," said Dr. Joseph Youngblood II, executive director of the Watson Institute. "Her vast experience and commitment to working with culturally diverse communities not only make her a pioneer in her field, but a true role model and public servant."

A native Trentonian, Berdecia and her husband Enrique have two sons, Adán and Gabriel. She is active in her church, Calvary Full Gospel in Fairless Hills, Pa., where she sings as a soloist, and is a Sunday school teacher for children.

Strategic Plan

from Page 1

Chaired by Chief Information Officer Drew Hopkins and Mary Ellen Caro, dean of the School of Business and Management, the committee led a broadly inclusive process that engaged staff in assessing and addressing both challenges and opportunities at the College. The result of these efforts is a plan that impacts all departments within the College.



The four goal areas comprise 11 planning goals that are supported by a series of aggressive strategies aimed at achieving those goals and enabling the College to realize its strategic vision by 2012.

The goals are largely interdependent and are not necessarily tied to any one functional area of the College. The goals and supporting strategies are measurable and defined with timeframes. Progress towards reaching these goals will be evaluated annually and supporting strategies will be recalibrated as needed.

Further, the College is implementing a management model to keep the plan on track and help foster collaborations between departments that are critical to the plan's success.

"We have taken a close look at not only what we do but also how we do it," said Dr. Brouwer. "The plan reaffirms the College's mission, adopts a set of shared values for the community and lays out a course to achieve our vision for 2012. It maps a path to an even more creative enterprise, not just academically but also operationally and organizationally."

Dr. Pruitt echoed this sentiment.

"This plan is guiding us on a new path that will position Thomas Edison State College as one of the finest institutions of its kind in the world," he said. "We are at an unprecedented time in the College's history."

Strategic Vision Plan: Goal Areas

Goal Area I: Transforming the Academic Enterprise

- GOAL 1 - Selectively develop degree and noncredit programs based on defined and demonstrated market demand.
- GOAL 2 - Review, restructure and refresh existing curriculum and critically examine the mix of degree programs and options for specializations within degree programs to address current and future demand.
- GOAL 3 - Improve and expand learner options.

Goal Area II: Assuring Quality

- GOAL 4 - Build a comprehensive learning outcomes foundation.
- GOAL 5 - Establish a College-wide quality assurance program that encompasses external validation of College programs, processes, systems and services.

Goal Area III: Securing and Developing the Asset Base

- GOAL 6 - Grow the College to 15,000 degree-seeking students.
- GOAL 7 - Develop the College's human capital to support the institution's strategic vision.
- GOAL 8 - Strengthen and develop the infrastructure to sustain the transformation.
- GOAL 9 - Increase and diversify revenue sources to support entrepreneurial ventures in new products, services and programs.

Goal Area IV: Providing Stewardship for the Public Interest

- GOAL 10 - Reinforce the position of the College as a recognized portal of access to collegiate education for adult learners.
- GOAL 11 - Strengthen the College's role as a vital public policy resource for decision makers and its institutional leadership in community and economic development.

Staff Activities

Dr. Susan Davenport, vice provost for Learner Services, earned her doctoral degree in educational studies with an emphasis in educational leadership and higher education from the University of Nebraska. Her dissertation was entitled "State College and University Governance and Policy Implementation."



Dr. Kenneth Lightfoot, instructional designer, Center for Directed Independent Adult Learning, earned his doctoral degree in history from the University of Wales Swansea. His dissertation was entitled: "The Household Knights of King Henry III, 1216-1236."

Michael J. Scheiring, vice president and treasurer of Thomas Edison State College, has been named president of Cerebral Palsy of New Jersey. A nonprofit corporation, the agency champions the independence and full participation in society for children and adults with disabilities, promotes activities that strengthen families and facilitates community support for people with disabilities.



John P. Thurber, vice president for Public Affairs, was re-elected president of the Board of Directors of the Trenton Downtown Association (TDA). The TDA is a private nonprofit corporation charged with the revitalization of Trenton's downtown Special Improvement District.



More than 100 attend College Day on Jan. 27: Staff from admissions, marketing, advisement, graduate and financial aid assisted prospective and newly enrolled students at the largest College Day ever.

New Staff

William Anders has been appointed Learner Services representative in the Office of Learner Services. Anders is located on the 1st floor of the Academic Center and may be reached at extension 3432.



Nancy Broglie has been appointed accountant III in the Office of the Controller. Broglie is located on the 2nd floor of the Canal Building and may be reached at extension 2375.

Deborah Bryant has been appointed human resources assistant payroll/generalist. Bryant is located on the 1st floor of Kuser Mansion and may be reached at extension 4135.



Jessica Dougherty has been appointed administrative assistant for the School of Nursing. She is located on the 3rd floor of the Townhouses and may be reached at extension 3260.

Joseph Guzzardo has been appointed director of Communications. Guzzardo is located on the 5th floor of the Kelsey Building and may be reached at extension 2047.



Michael Kennedy has been appointed accounting assistant in the Office of the Controller. Kennedy is located on the 2nd of the Canal Building and may be reached at extension 2410.

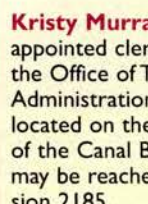
Maureen Flanagan Marcus has been appointed confidential assistant in the Division of Planning and Research. Marcus is located on the 4th floor of the Kelsey Building and may be reached at 2027.



David A. Miller has been appointed associate vice president for Development. Miller is located at 5th floor of the Kelsey Building and may be reached at extension 2077.



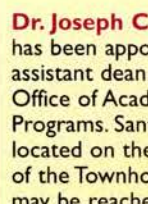
Chris Miller has been appointed art director in the Office of Publications. Miller is located on the 1st floor of the Canal Building and may be reached at extension 4010.



Kristy Murray has been appointed clerk typist in the Office of Test Administration. She is located on the 3rd floor of the Canal Building and may be reached at extension 2185.



Kelly Saccomanno has been appointed program assistant/editorial specialist in the Office of Communications. Saccomanno is located on the 5th floor of the Kelsey Building and may be reached at extension 2070.



Dr. Joseph C. Santora has been appointed as assistant dean in the Office of Academic Programs. Santora is located on the 2nd floor of the Townhouses and may be reached at extension 3200.



Dr. Nicky Sheats has been appointed fellow/director of Urban Environment in The John S. Watson Institute for Public Policy. Sheats is located on the 2nd floor of the Kuser Mansion and may be reached at extension 4280.



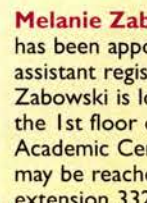
Robin Smith has been appointed director of Community Affairs and Government Relations. Smith is located on the 3rd floor of Kelsey Building and may be reached at extension 2085.



Dr. Penelope Stowe Brouwer has been appointed vice president for Planning and Research. Brouwer is located on the 4th floor of the Kelsey Building and may be reached at extension 2023.



Sean Reilly has been appointed as an admissions counselor in the Office of Admissions. Reilly is located on the 1st floor of the Canal Building and may be reached at extension 3035.



Melanie Zabowski has been appointed as assistant registrar. Zabowski is located on the 1st floor of the Academic Center and may be reached at extension 3325.



Congratulations!

Jared Carter, specialist III, Office of Management Information Systems, and his wife Chrissy, are the proud parents of Thomas Allen Carter. Born on Oct. 18, Thomas weighed 8 pounds, 1 ounce and was 21 inches long.

Karen Hume, director of Publications, and her husband, Jay, are the proud parents of Tanner Jay Hume. Born on Oct. 10, Tanner weighed 7 pounds, 5 ounces and was 19 1/2 inches long.

Estelle Reeves, program assistant, Office of Academic Programs, has earned the Certified Professional Secretary® (CPS®) rating from the International Association of Administrative Professionals, the leading association for administrative support staff. This prestigious professional designation requires an individual to satisfy education and experience requirements, and pass a comprehensive three part examination.

Dr. Joseph Youngblood II, executive director of The John S. Watson Institute for Public Policy, and his wife, Allyson, are the proud parents of Joseph Vernon Youngblood. Born on May 24, Joseph weighed 3 pounds, 6 ounces and was 18 inches long.

Capital Campus is produced by the Office of Communications. To submit a story idea for the newsletter or for more information, please contact Linda Soltis at extension 2065.